

The **Podiatry** Solution with Best-In-Class Imaging, Easy to Use Workflow, Rapid Assessment, Clarity, and Confidence.

Superior Image Quality

- ▶ Superior image quality to detect structures as small as several hundred microns
- ▶ **Simple Needle Visualization (SNV®)** for increased accuracy of needle placement during both in-plane and out-of-plane techniques
- ▶ Broadband linear probe, L18-4, for deep and superficial structures
- ▶ Triad Tissue Harmonic imaging expands linear probe field of view
- ▶ Color Doppler, Power Doppler, Pulse Wave Imaging Modes Standard
- ▶ **PANORAMIC IMAGING** (Optional)

Streamlined Workflow

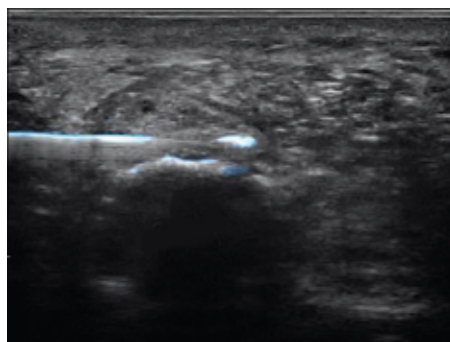
- ▶ Easy access to application specific measurements and annotations
- ▶ Customizable pre-sets
- ▶ Compare mode for side-by-side image comparison
- ▶ Two pedal foot switch and custom pole cart are standard

Ease of Use

- ▶ Intuitive touch screen gestures
- ▶ Customizable screen design
- ▶ Simplified 8-button control panel
- ▶ Programmable quick keys
- ▶ VOICE CONTROL (Optional)
- ▶ One touch image optimization



Simple Needle Visualization



Intuitive Touchscreen



for more, visit
2020imaging.net/hs2

Ergonomic and Portable

- ▷ Hand-carried 17.5 lb. system
- ▷ 15" high resolution anti-glare touch screen
- ▷ 180° swivel monitor for patient viewing
- ▷ Wireless LAN (optional)

Warranty

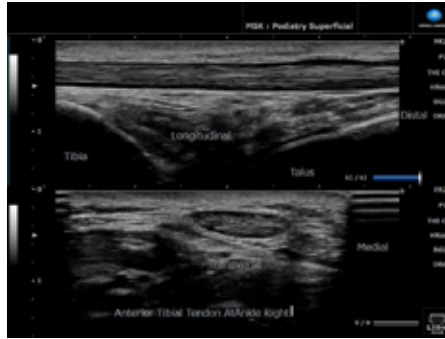
- ▷ **5-year on system and transducer**

Successful Education & Practice Management

- ▷ MskNav™ - Ultrasound Education App (Optional)
- ▷ 1 day of clinical applications installation
- ▷ Practice management and reimbursement direction
- ▷ Training: Ultrasound Basics, Knobology, Sample Reports & Documentation, Imaging Techniques, and Reimbursement Direction



Shown with optional Printer & add'l SONIMAGE HS2



Anterior Tibial Tendon



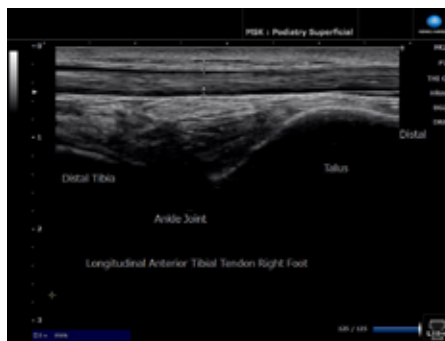
Ganglion Cyst - Longitudinal Left Foot



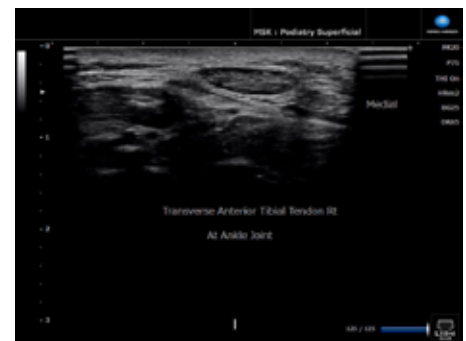
Longitudinal Plantar Fascia



Long Joint Capsule Tear



Longitudinal Anterior Tibial Tendon



Transverse Anterior Tibial Tendon



Transverse Tarsal Tunnel



Duplex Doppler - Tarsal Tunnel Vessels